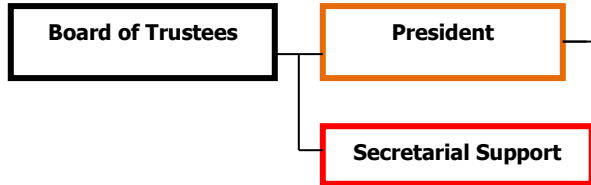


North Central Michigan College

Organizational Chart



GOLD = REPORTS TO BOARD
RED = REPORTS TO PRESIDENT
BLUE = REPORTS TO V.P. OF ACADEMIC AFFAIRS & STUDENT SUCCESS
GREEN = REPORTS TO V.P. OF FINANCE & FACILITIES
PURPLE = REPORTS TO V.P. OF STUDENT AFFAIRS

