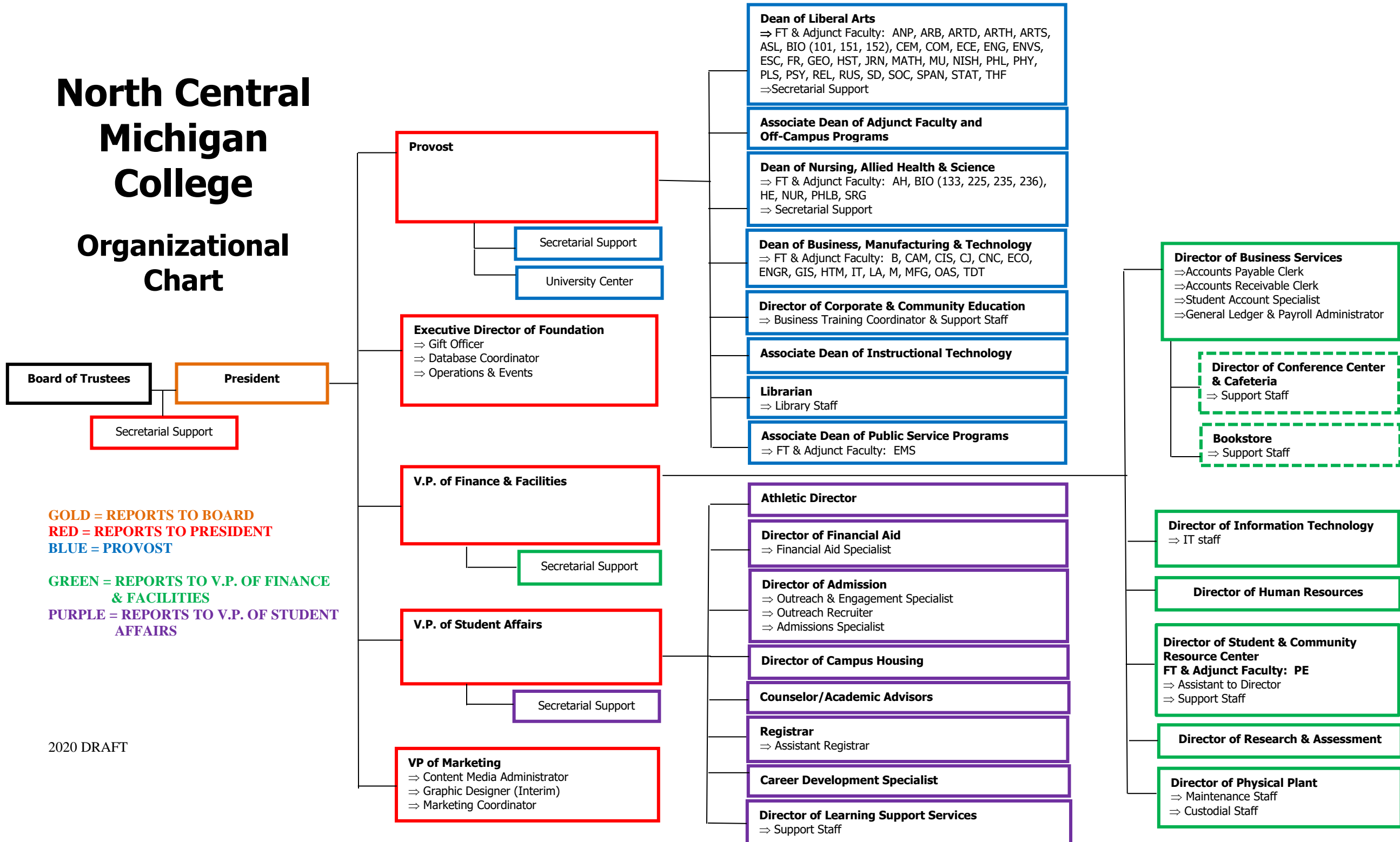


North Central Michigan College

Organizational Chart



GOLD = REPORTS TO BOARD
RED = REPORTS TO PRESIDENT
BLUE = PROVOST

GREEN = REPORTS TO V.P. OF FINANCE & FACILITIES
PURPLE = REPORTS TO V.P. OF STUDENT AFFAIRS

Provost

Secretarial Support
 University Center

Executive Director of Foundation
 ⇒ Gift Officer
 ⇒ Database Coordinator
 ⇒ Operations & Events

V.P. of Finance & Facilities

Secretarial Support

V.P. of Student Affairs

Secretarial Support

VP of Marketing
 ⇒ Content Media Administrator
 ⇒ Graphic Designer (Interim)
 ⇒ Marketing Coordinator

Dean of Liberal Arts
 ⇒ FT & Adjunct Faculty: ANP, ARB, ARTD, ARTH, ARTS, ASL, BIO (101, 151, 152), CEM, COM, ECE, ENG, ENV5, ESC, FR, GEO, HST, JRN, MATH, MU, NISH, PHL, PHY, PLS, PSY, REL, RUS, SD, SOC, SPAN, STAT, THF
 ⇒ Secretarial Support

Associate Dean of Adjunct Faculty and Off-Campus Programs

Dean of Nursing, Allied Health & Science
 ⇒ FT & Adjunct Faculty: AH, BIO (133, 225, 235, 236), HE, NUR, PHLB, SRG
 ⇒ Secretarial Support

Dean of Business, Manufacturing & Technology
 ⇒ FT & Adjunct Faculty: B, CAM, CIS, CJ, CNC, ECO, ENGR, GIS, HTM, IT, LA, M, MFG, OAS, TDT

Director of Corporate & Community Education
 ⇒ Business Training Coordinator & Support Staff

Associate Dean of Instructional Technology

Librarian
 ⇒ Library Staff

Associate Dean of Public Service Programs
 ⇒ FT & Adjunct Faculty: EMS

Athletic Director

Director of Financial Aid
 ⇒ Financial Aid Specialist

Director of Admission
 ⇒ Outreach & Engagement Specialist
 ⇒ Outreach Recruiter
 ⇒ Admissions Specialist

Director of Campus Housing

Counselor/Academic Advisors

Registrar
 ⇒ Assistant Registrar

Career Development Specialist

Director of Learning Support Services
 ⇒ Support Staff

Director of Business Services
 ⇒Accounts Payable Clerk
 ⇒Accounts Receivable Clerk
 ⇒Student Account Specialist
 ⇒General Ledger & Payroll Administrator

Director of Conference Center & Cafeteria
 ⇒ Support Staff

Bookstore
 ⇒ Support Staff

Director of Information Technology
 ⇒ IT staff

Director of Human Resources

Director of Student & Community Resource Center
 FT & Adjunct Faculty: PE
 ⇒ Assistant to Director
 ⇒ Support Staff

Director of Research & Assessment

Director of Physical Plant
 ⇒ Maintenance Staff
 ⇒ Custodial Staff